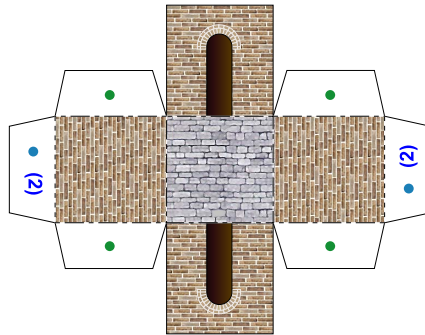
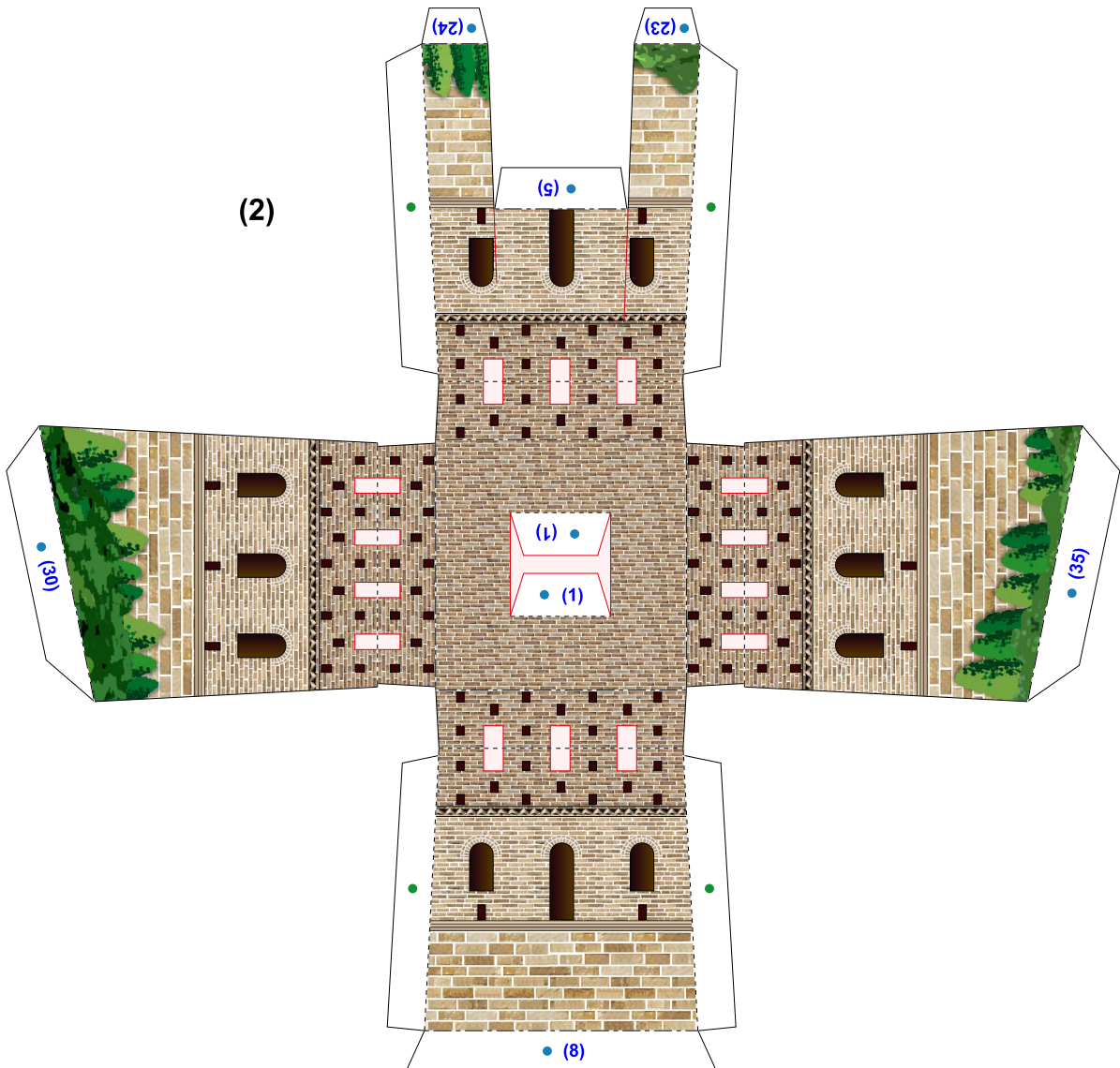
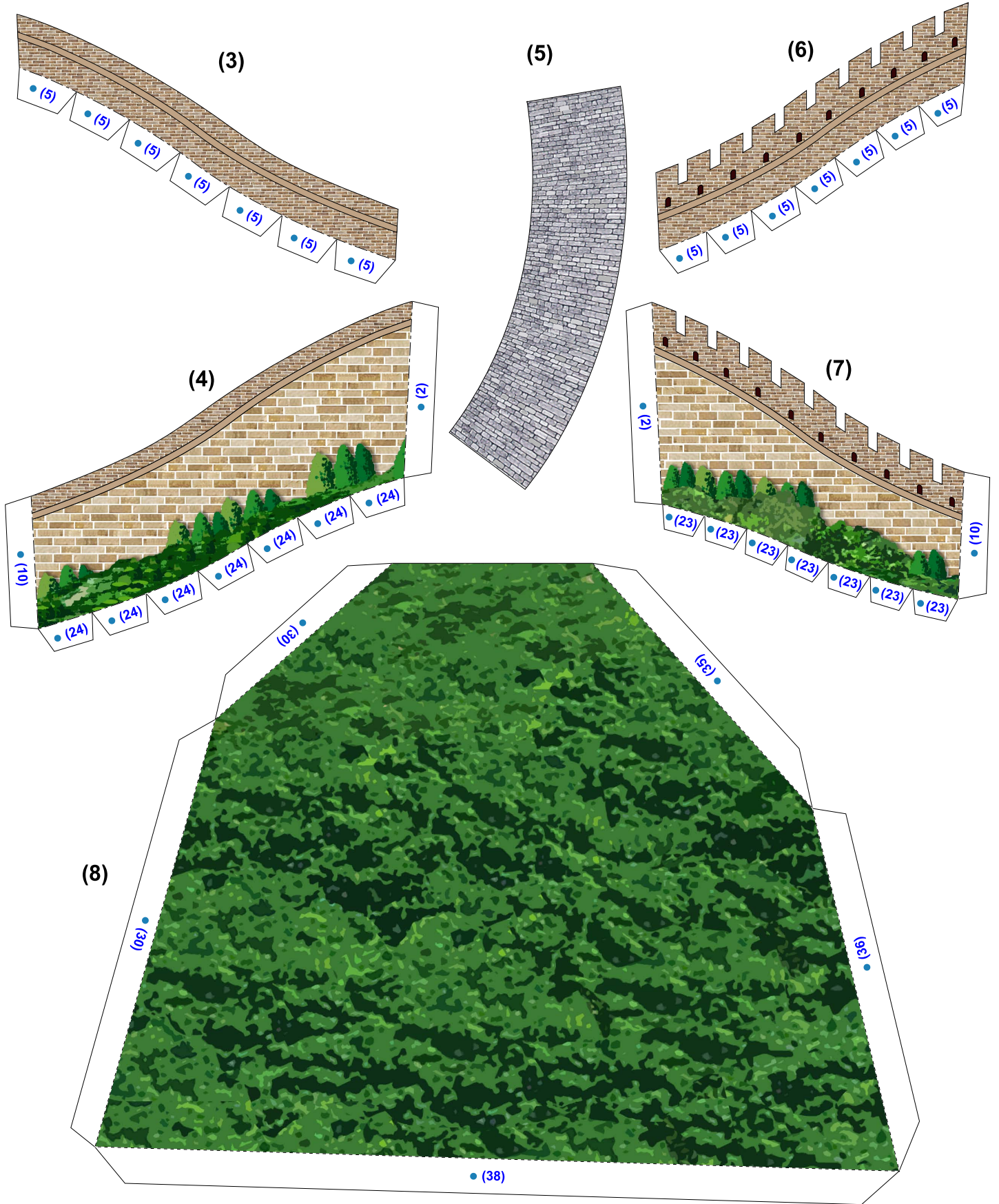


(1)

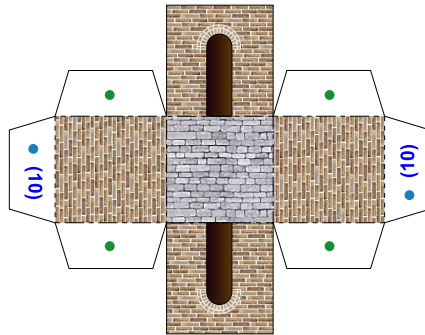


(2)

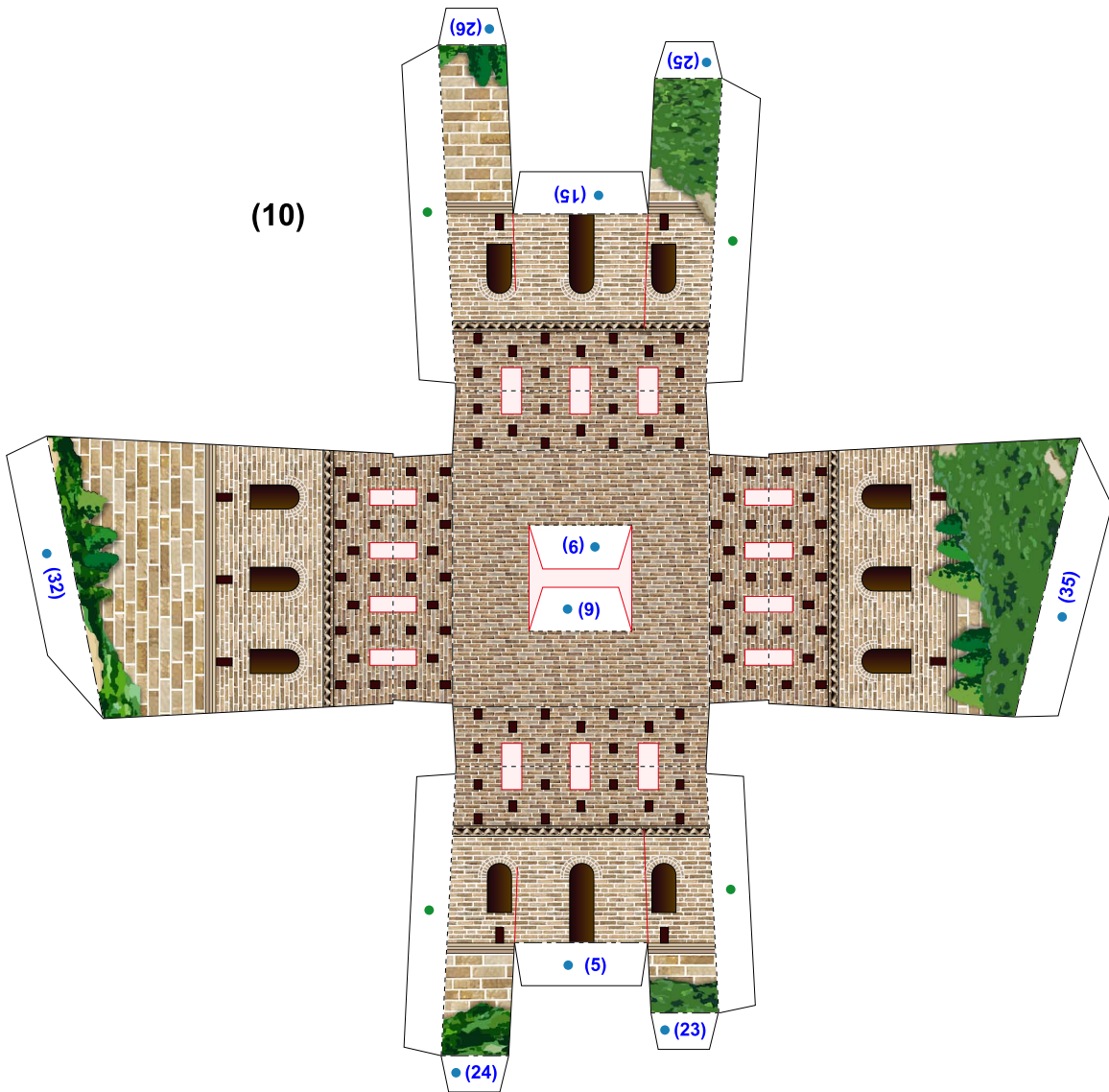


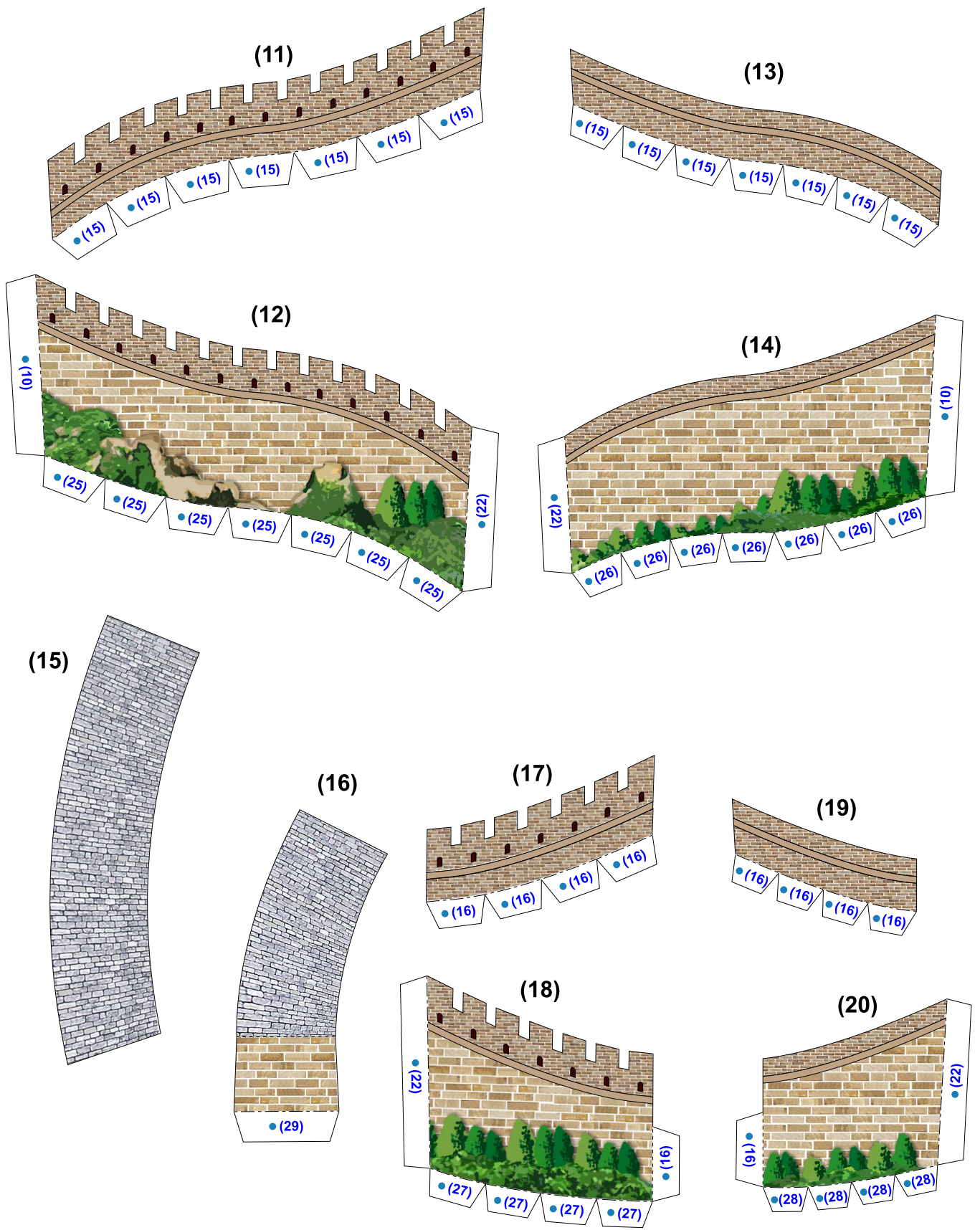


(9)

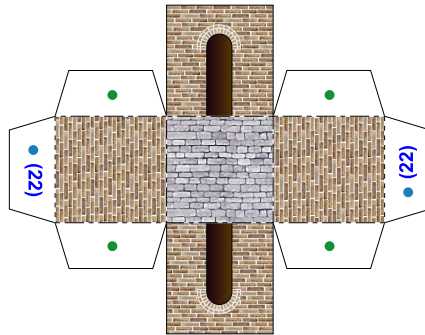


(10)

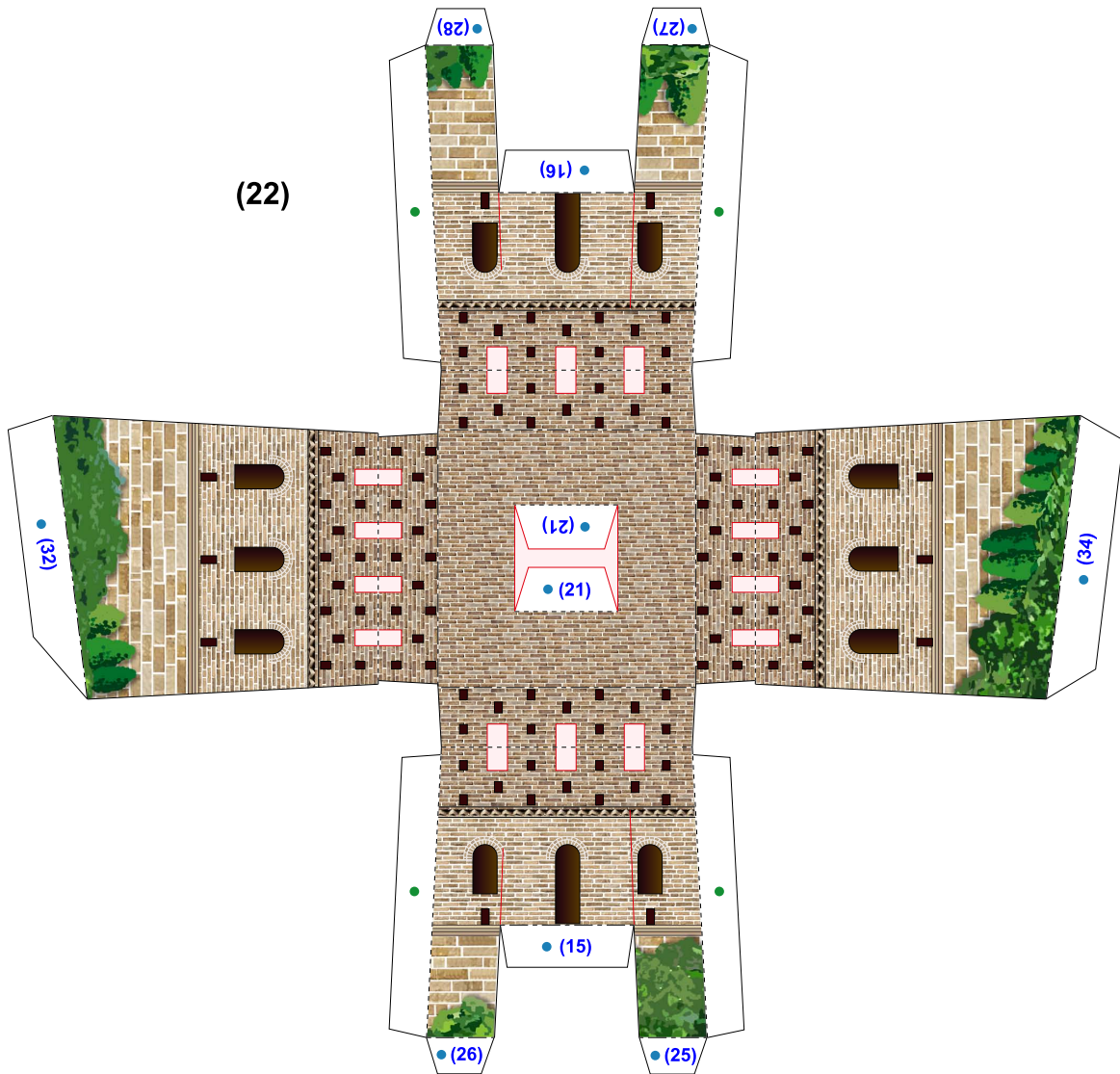


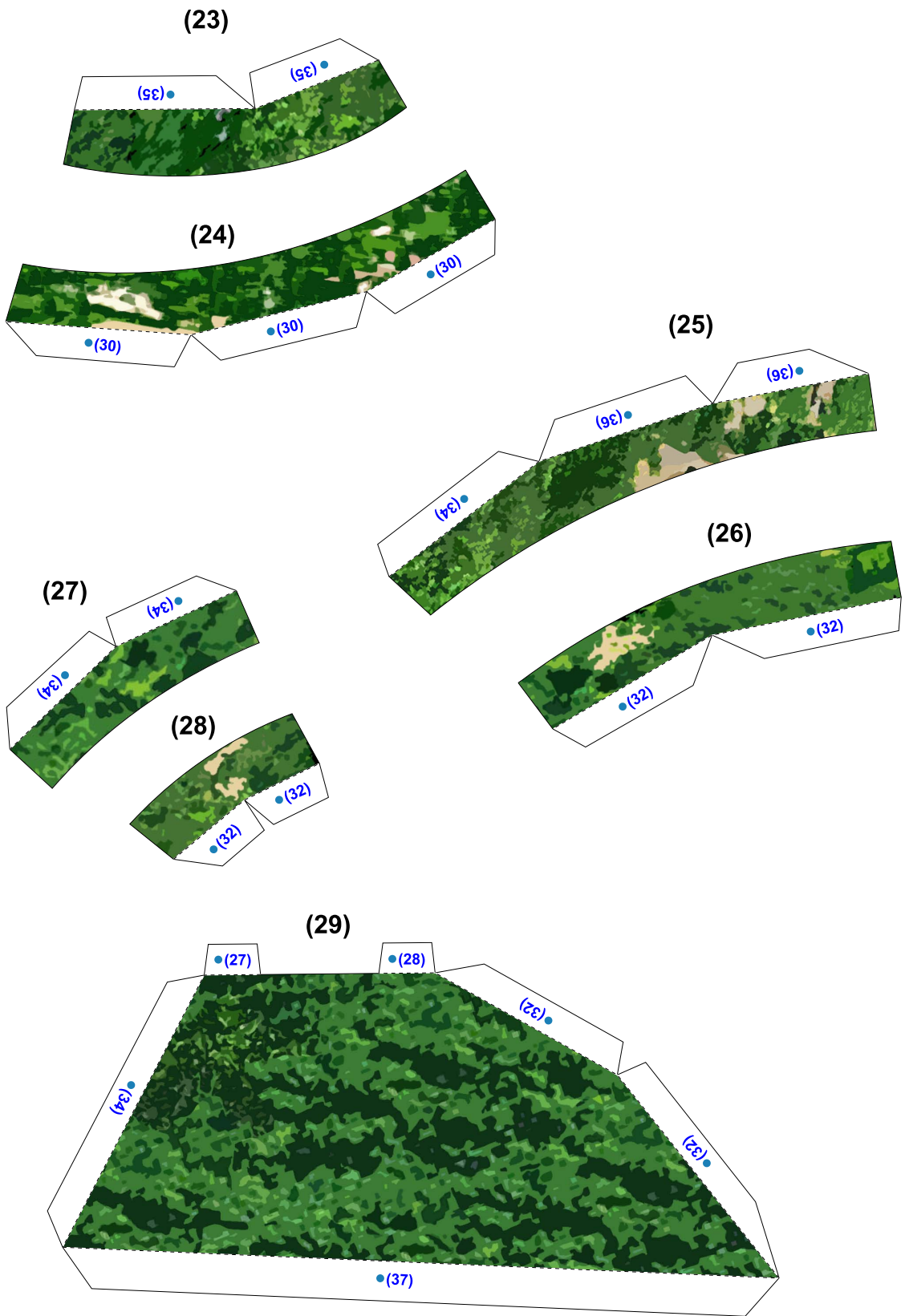


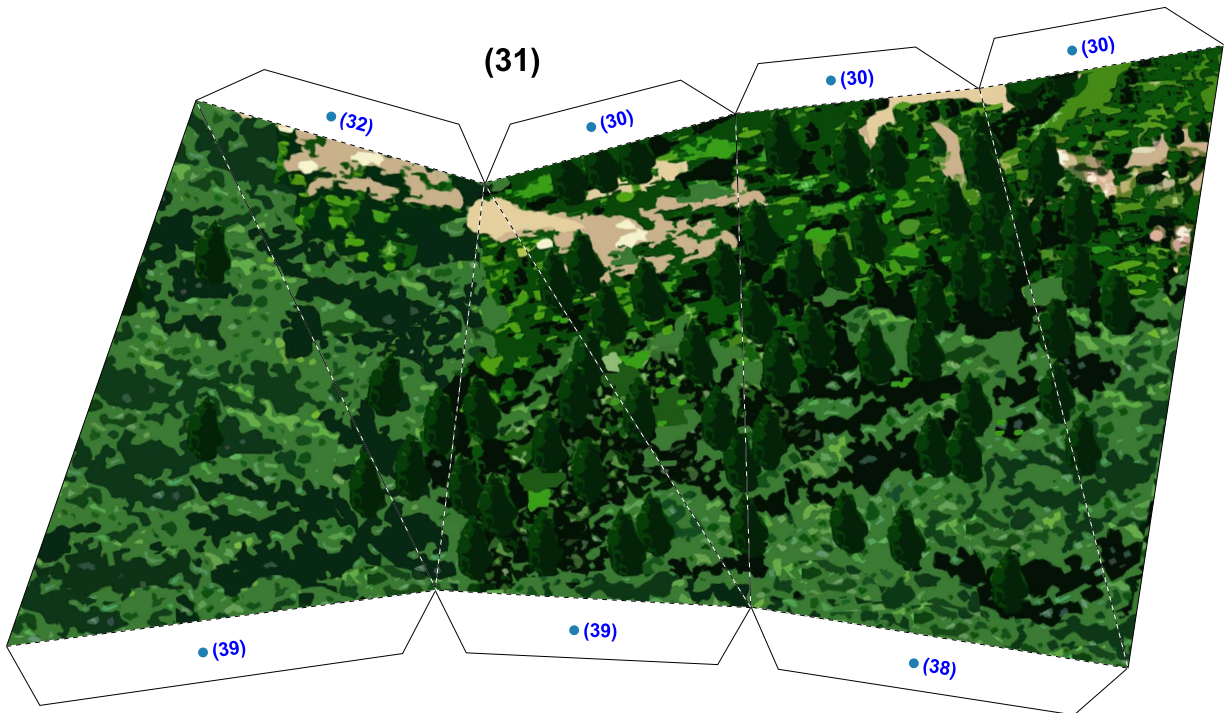
(21)



(22)

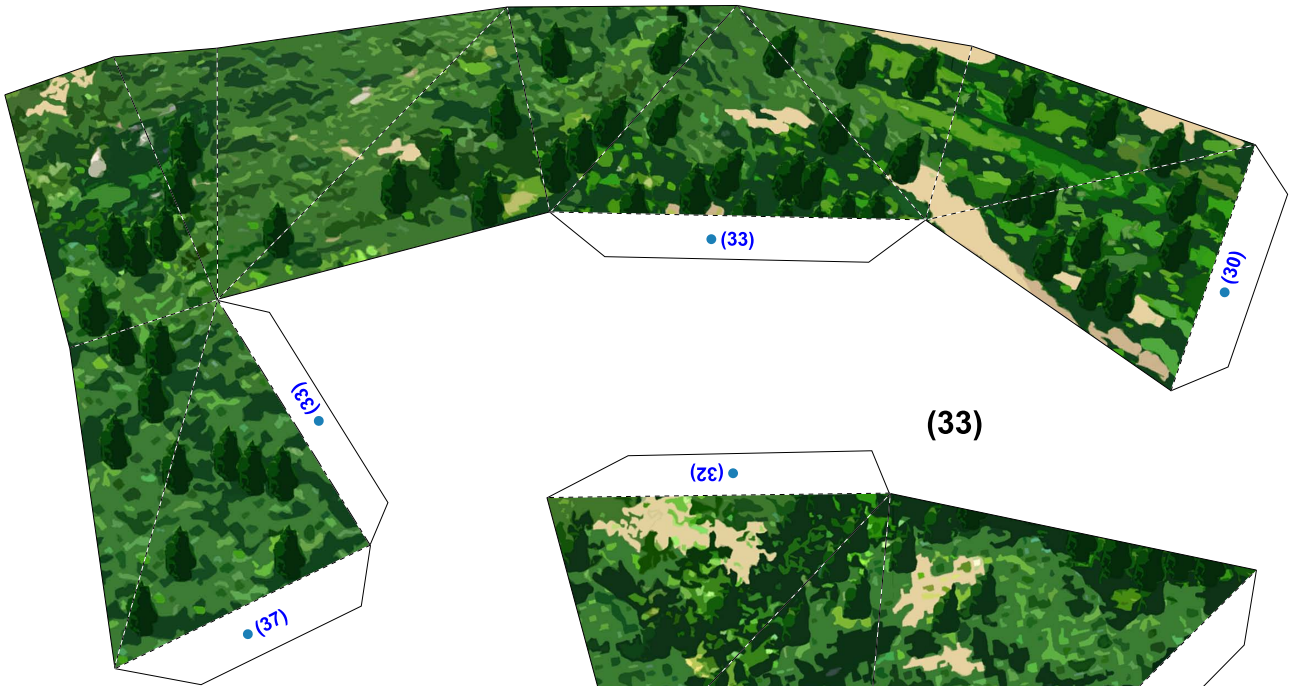




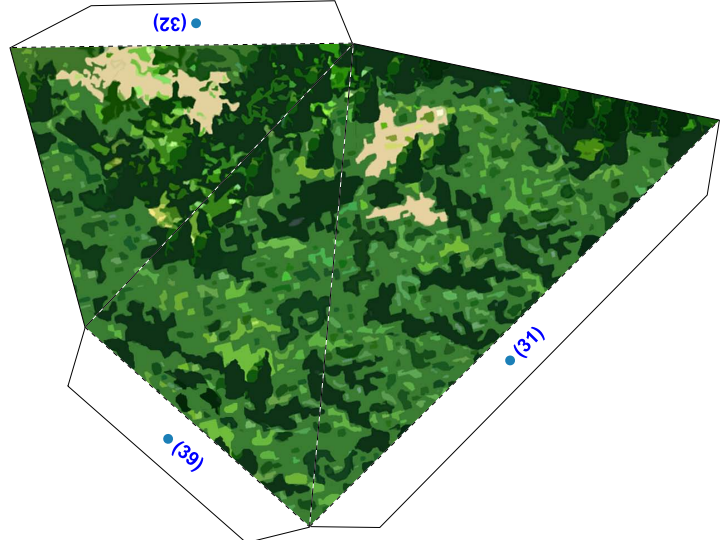




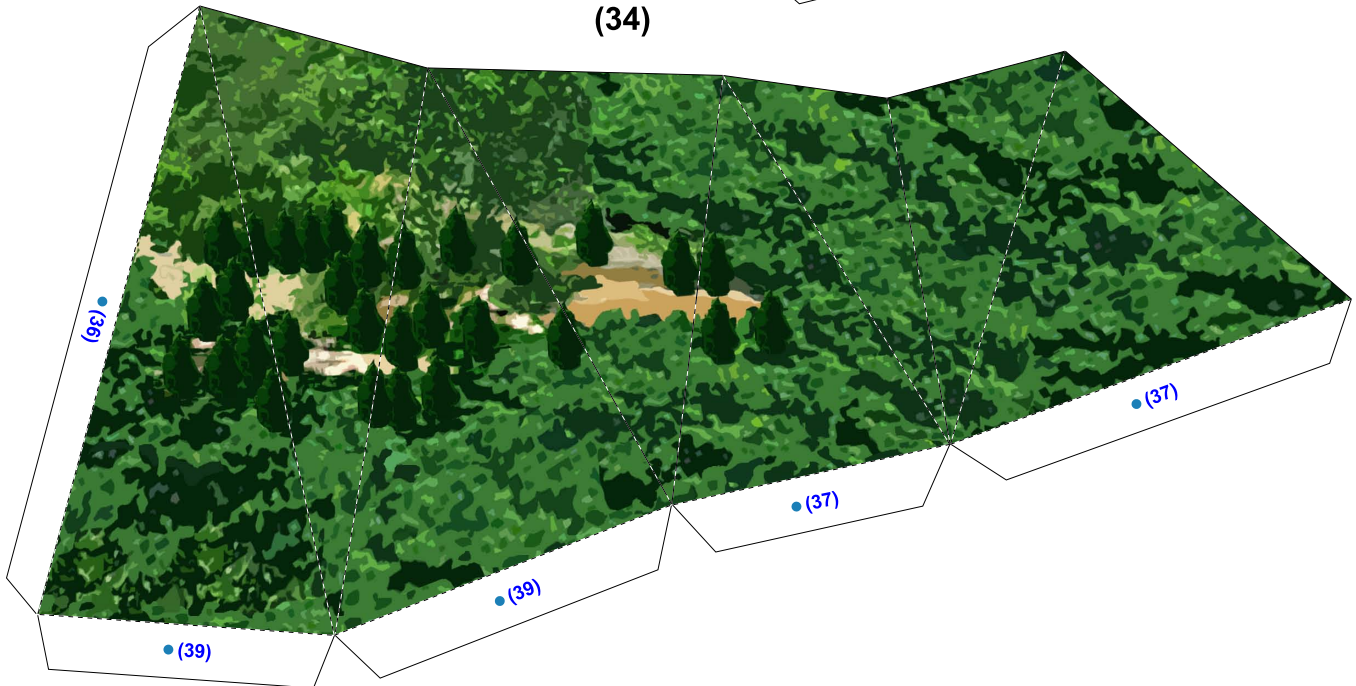
(32)



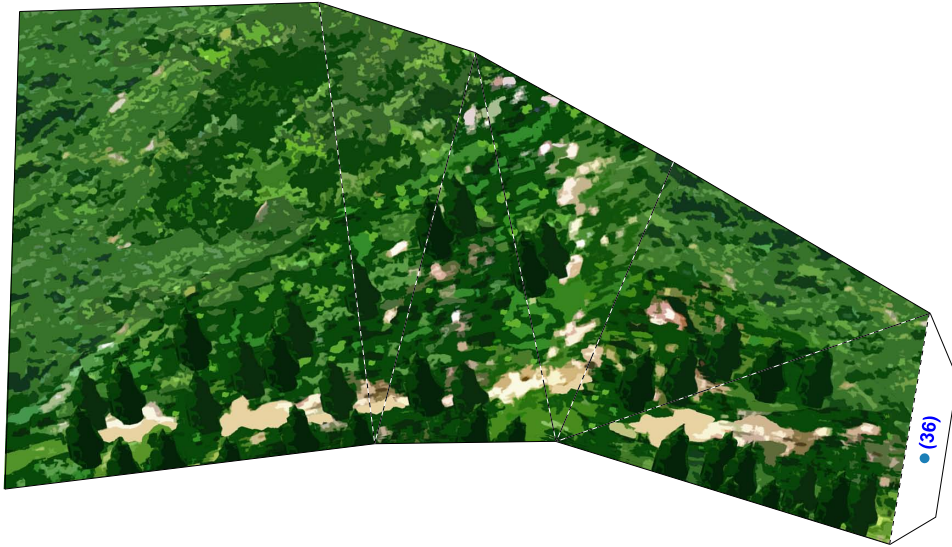
(33)



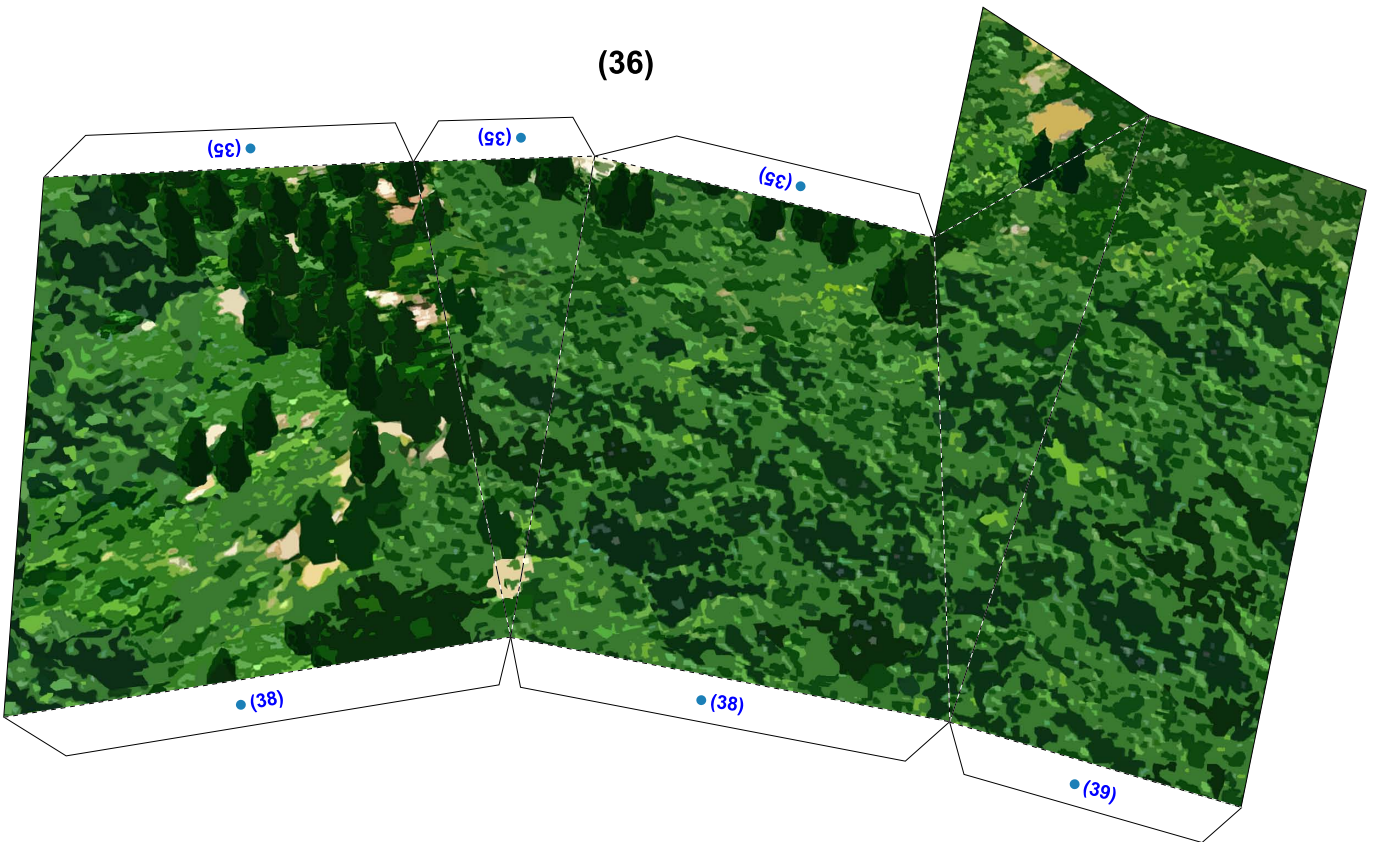
(34)



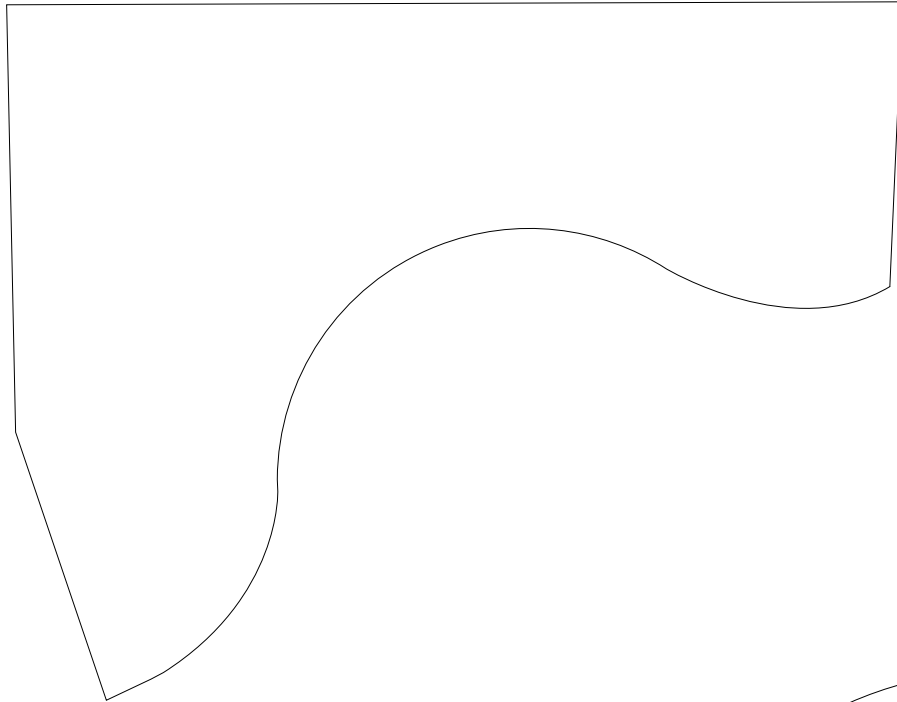
(35)



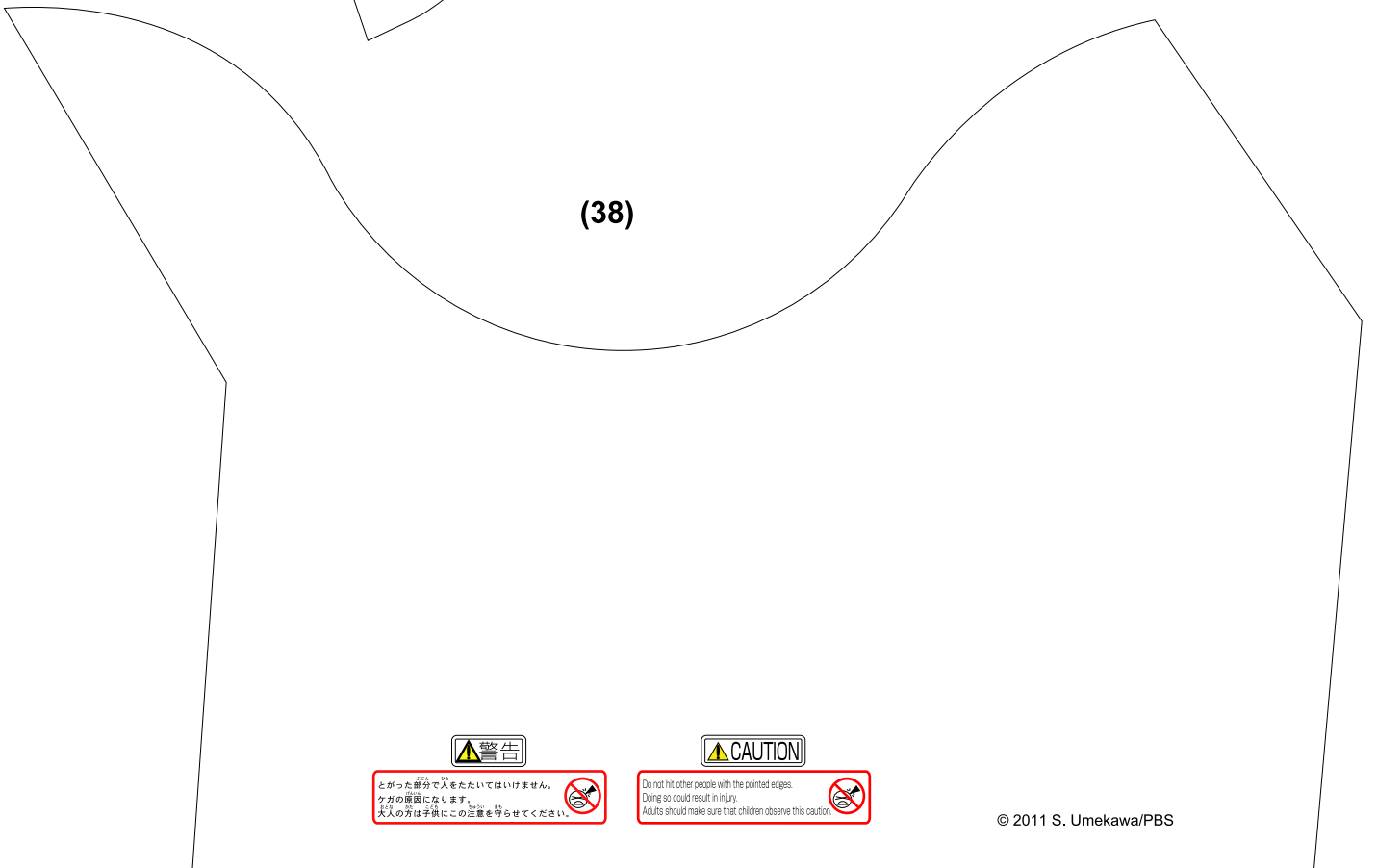
(36)



(37)



(38)



とがった部分で人をたいてはけません。
ケガの原因になります。
大人の方は子供にこの注意を知らせてください。



CAUTION
Do not hit other people with the pointed edges.
Doing so could result in injury.
Adults should make sure that children observe this caution.



© 2011 S. Umekawa/PBS

